

## CA Permit Practice Test 2 (California DMV Practice Test)

**Total Items: 46**

**Passing Marks: 38 correct answers to pass.**

**1. When following a vehicle at night, lower your high beam headlights when you are within:**

- A. 300 feet
- B. 100 feet
- C. 200 feet

**2. When entering a freeway, you should not:**

- A. Use your turn signal
- B. Match the speed of the traffic in the right lane
- C. Cross a solid line

**3. To avoid the glare from oncoming headlights:**

- A. Focus your eyes on the center line of the road
- B. Glance back and forth between the side of the road and straight ahead
- C. Focus your eyes on the side of the road

**4. If your vehicle begins to hydroplane you should:**

- A. Release the accelerator
- B. Pull off the road immediately and slow down gradually
- C. Pump the brakes

**5. You should avoid the right lane of the freeway during rush hour:**

- A. To allow emergency vehicles to pass
- B. Because it is the most likely place for accidents
- C. To leave room for vehicles entering and exiting

**6. Switch to low beams when oncoming traffic is within:**

- A. 750 feet
- B. 300 feet
- C. 500 feet

**7. When driving on wet roads you should:**

- A. Reduce your speed
- B. Pump your brakes occasionally
- C. Switch to low beam headlights

**8. If you have a tire blowout:**

- A. Pump the brakes rapidly and pull off the road
- B. Do not brake, but slow down and pull off the road
- C. Turn the wheel in the direction of the skid

**9. If you drive in fog, you should turn on the:**

- A. Low beam headlights
- B. Parking lights
- C. High beam headlights

**10. If you come upon a severe dust storm, you should:**

- A. Maintain your speed and don't change lanes
- B. Turn on your headlights
- C. Reduce speed and pull off the road

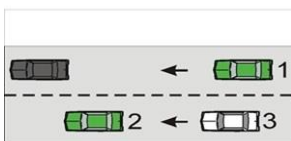
**11. When you merge onto a freeway, you should be driving:**

- A. At the legal speed limit on the freeway
- B. At the same speed as the traffic in the right lane
- C. About 10 mph slower than the speed limit

**12. The best way to bring your vehicle out of a skid is to:**

- A. Turn the wheel in the direction of the skid
- B. Turn the wheel away from the direction of the skid
- C. Pump the brakes

**13. If you are in the black car, the most difficult car for you to see is:**



- A. Car 3
- B. Car 2
- C. Car 1

**14. You should leave enough space between you and the vehicle directly in front of you:**

- A. To stay out of the other driver's blind spot
- B. So the other driver can see both your headlights in the rearview mirror
- C. To allow for a sudden stop

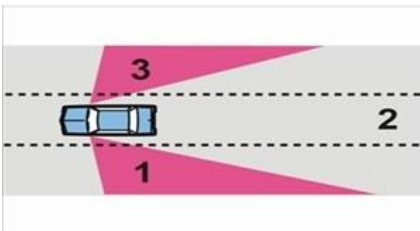
**15. When changing lanes, check your side mirrors for other traffic and:**

- A. Slow down by at least one third
- B. Check the inside rearview mirror
- C. Turn your head quickly and look over your shoulder

**16. To keep aware of the position of traffic behind you, it is best to:**

- A. Turn your head and look out the rear window
- B. Check your rearview mirror often
- C. Create a space cushion around you

**17. The driver of this vehicle has a "blind spot" in:**



- A. Areas 1 and 3
- B. Area 2
- C. Areas 1 and 2

**18. Normally, the distance from you to the vehicle ahead should be at least equivalent to:**

- A. 5 seconds
- B. 3 seconds
- C. 2 seconds

**19. If you come to an intersection and your view to the side is blocked, you should:**

- A. Stop, then inch forward until you can see clearly in both directions
- B. Maintain speed and look both ways
- C. Slow down and look both ways

**20. You are required by law to notify the Motor Vehicle Division of a change of address within:**

- A. 10 days
- B. 30 days
- C. 6 months

**21. Penalties for the first conviction for driving under the influence are:**

- A. 30 to 60 days of probation, \$90.00 to \$100.00 in fines plus penalty assessments
- B. 12 to 18 months of probation, \$190.00 to \$150.00 in fines plus penalty assessments
- C. 3 to 5 years of probation, \$390.00 to \$1000.00 in fines plus penalty assessments

**22. Driving without a license could result in:**

- A. a fine and jail sentence.
- B. a fine and jail sentence, 90 day suspension,
- C. a fine and jail sentence, 1 suspension, community service and ignition interlock

**23. You are driving under the influence if your blood alcohol concentration is:**

- A. 0.08% or above (0.04 if the vehicle requires a commercial license)
- B. 0.80% or above (0.40 if the vehicle requires a commercial license)
- C. 0.10% or above (0.04 if the vehicle requires a commercial license)

**24. If under age 21, your license may be suspended if your blood alcohol concentration is:**

- A. 0.10% or above
- B. 0.05% or above
- C. Any amount

**25. You are driving under the extreme influence if your blood alcohol concentration is:**

- A. 0.18% or above
- B. 0.28% or above
- C. 0.15% or above

**26. Bicyclists should:**

- A. Ride facing traffic
- B. Ride with the flow of traffic
- C. Ride on the sidewalk

**27. When passing a bicycle traveling in the same direction, leave a distance of at least:**

- A. 3 feet
- B. 6 feet
- C. 10 feet

**28. Bicyclists must:**

- A. Stay in the right lane at all times
- B. Obey the same traffic laws as motor vehicles
- C. Never pass motor vehicles

**29. It is illegal to follow fire vehicles traveling in response to an alarm, within:**

- A. 200 feet
- B. 300 feet
- C. 500 feet

**30. The Arizona Distracted Driver law prohibits:**

- A. Holding or supporting a wireless device
- B. Having another person in your car
- C. Chewing gum

---

**Answer Keys:**

- 1. C
- 2. C
- 3. B
- 4. A
- 5. C
- 6. C
- 7. A
- 8. B

- 9. A
- 10. C
- 11. B
- 12. A
- 13. B
- 14. C
- 15. C
- 16. B
- 17. A
- 18. B
- 19. A
- 20. A
- 21. C
- 22. A
- 23. A
- 24. C
- 25. C
- 26. B
- 27. A
- 28. B
- 29. C
- 30. A