

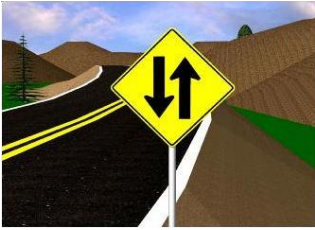
Alaska DMV Driving Knowledge Test 2

Official Sample Test: 20 MCQs

Time: 25 minutes

Passing Marks: 16 correct answers to pass.

1. The meaning of the sign is:



- A. Keep to the right of a divided highway.
- B. Two way road.
- C. Traffic merging from the right.
- D. Traffic merging from the left.

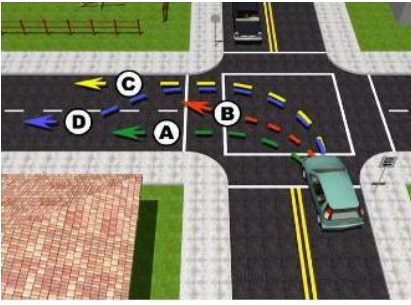
Answer: B

2. Under Alaska's financial responsibility law, if you are determined to be at fault for a vehicle crash and not covered by automobile liability insurance, the minimum license suspension is:

- A. 90 days or until you obtain automobile liability insurance.
- B. One year.
- C. Three years or until a financial settlement is made with the damaged parties or their insurance company.
- D. Five years or until a financial settlement is made with the damaged parties or their insurance company.

Answer: C

3. When turning from a two way street onto a one way street which path should you follow?



- A. Path C
- B. Path A
- C. Path B
- D. Path D

Answer: B

4. As you enter an intersection, a traffic light turns yellow. You should:

- A. Stop and back up.
- B. Accelerate.
- C. Stop as quickly as possible.
- D. Pass on through cautiously.

Answer: D

4. At an intersection with a traffic light showing a left green arrow, you should:

- A. Wait until the light turns green.
- B. Stop, then make the left turn.
- C. Turn left when intersection is clear.
- D. Always speed up and quickly turn left.

Answer: C

5. When driving in a roundabout you should:

- A. Enter when there is a gap in traffic.
- B. Yield to traffic already in the roundabout.
- C. Exit at any street, or continue around if you missed your exit.
- D. All of the above.

Answer: D

6. If you are about to miss your exit from a controlled access highway or freeway you should:

- A. Signal your intentions, break, and move sharply to the right.
- B. Continue on to the next exit.
- C. Pull over to the right and carefully back up to the exit ramp.
- D. Cross over the median strip to exit going the opposite way.

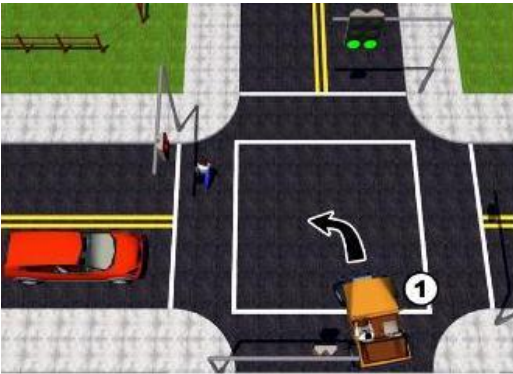
Answer: B

7. Demerit points are added to your driver record when you are convicted of a traffic violation. How many points accumulated in a 12 month period will result in suspension of your license?

- A. 12
- B. 10
- C. 8
- D. 6

Answer: A

8. You are in car number 1 turning left when the light turns green. You should:



- A. Honk your horn to let the pedestrian know you intend to turn.
- B. Yield to the pedestrian.
- C. Stop in the intersection to let the pedestrian cross.
- D. None of the above.

Answer: B

9. At this sign you must:



- A. Slow down and prepare to stop if another car is close.
- B. Make a complete stop.
- C. Stop at least two car lengths from the intersection.
- D. None of these.

Answer: B

10. It is permissible to drive around a railroad crossing gate that is down or going down:

- A. Never.
- B. If the train appears to be slow.
- C. If you have plenty of time before the gate is fully down.
- D. If there is a safe shoulder to the right of the gate.

Answer: A

11. Before pulling out to pass on the highway you must:

- A. Drive as close to the left side of the road as possible.
- B. Speed up at least 20 mph.
- C. Get as close as possible to the car ahead before pulling out to pass.
- D. Signal your intention.

Answer: D

12. It is illegal to park closer than ____ feet from a fire hydrant: (IMG)



- A. 25
- B. 15
- C. 30

D. 20

Answer: B

13. The first half hour after it starts to rain often makes the road surface slippery because:

- A. Dust and road film are not washed off the road surface.
- B. Your tires absorb more water at first.
- C. Water tends to pool more at that time.
- D. It rains harder during that time.

Answer: A

14. When entering a controlled access highway-freeway it is important:

- A. Use the acceleration lane before merging into the traffic stream.
- B. Move directly into the right hand traffic lane.
- C. Get up to speed just as quickly as possible.
- D. Make your vehicle noticed so that the drivers already on the roadway will yield and let you in.

Answer: A

15. A solid double yellow center line means:

- A. Dangerous curve ahead, reduce speed.
- B. Passing is not permitted.
- C. Residential district.
- D. Passing permitted when safe.

Answer: B

16. You are stopped at a railroad crossing and the train has just passed. You can:

- A. Look to see if another train is coming and then cross the tracks if clear.
- B. Pull aside to have a better view and then cross the tracks.
- C. Start to cross the tracks.
- D. Wait 20 seconds to cross the tracks.

Answer: A

17. A flashing yellow traffic signal means:

- A. Slow down and proceed with caution.
- B. Go straight ahead.
- C. Stop.
- D. No left turn.

Answer: A

18. Parking lights may only be used:

- A. When parked.
- B. When visibility is poor.
- C. Within one hour of sunset or sunrise.
- D. All of these.

Answer: A

19. Alaska's implied consent law requires you to:

- A. Provide a safety seat for your child.
- B. Provide proof of automobile liability insurance.
- C. Provide a sample of your breath after a lawful arrest for driving under the influence (DUI).
- D. None of the above.

Answer: C

20. If your license is suspended or revoked, the period of suspension or revocation will continue beyond the ending date unless you properly reinstate your driving privileges. To reinstate your driving privileges you must:

- A. Pass any required tests.
- B. Pay any reinstatement fees.
- C. Provide proof of financial responsibility for the future (SR-22 insurance).
- D. All of the above.

Answer: D